

The background features a teal color with diagonal stripes in lighter and darker shades. A stylized microphone with a red body and a red circular head with three blue lines is positioned in the upper left. A large, light orange speech bubble with a red tail pointing towards the bottom right contains the text.

# **MODERATED VOICE ACTOR Q&A PANELS**

INFO PACKET BY LEXI NIETO

# CONTENTS

## **I. PANEL HOSTING & MODERATION**

- The Benefits of a Moderator
- Having Lexi as Your VA Q&A Panel Moderator

## **II. THE CLASSIC AUDIENCE LINE-UP**

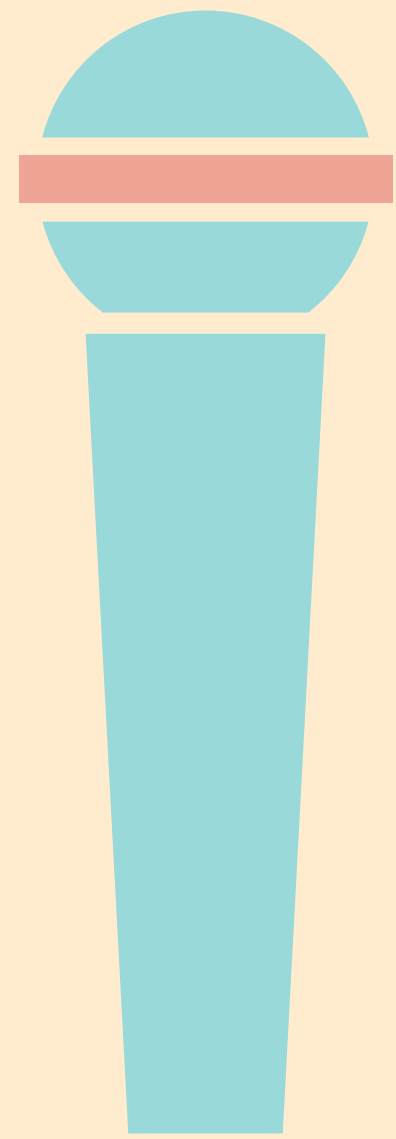
- How It Works
- Pros & Cons

## **III. MOBILE QUESTION SUBMISSIONS**

- How It Works
- Submission Form Method Options
- Pros & Cons

## **IV. A LITTLE MORE ABOUT LEXI**

*Click any section to jump to its contents.*



# **PANEL HOSTING & MODERATION**

# THE BENEFITS OF A MODERATOR

## SMALLER SCALE PANELS

When the audience is a bit too sparse for a consistent **line of questions**, a moderator can keep the momentum consistent and fill in gaps by asking their own questions or further elaborating on previously discussed topics.

## LARGER SCALE PANELS

In the case of a very packed room, a moderator could either bring their own set of questions (so as to avoid having to cut off several people in line) or take **mobile submissions** in order to fit in as many audience questions as possible.



# HAVING LEXI AS YOUR V.A. Q&A PANEL MODERATOR

## ENGAGING HOST

With extensive training in live entertainment and improvisation, Lexi creates a comfortable yet engaging environment for both the guests and attendees.

View Lexi's hosting resume [\*\*here\*\*](#).

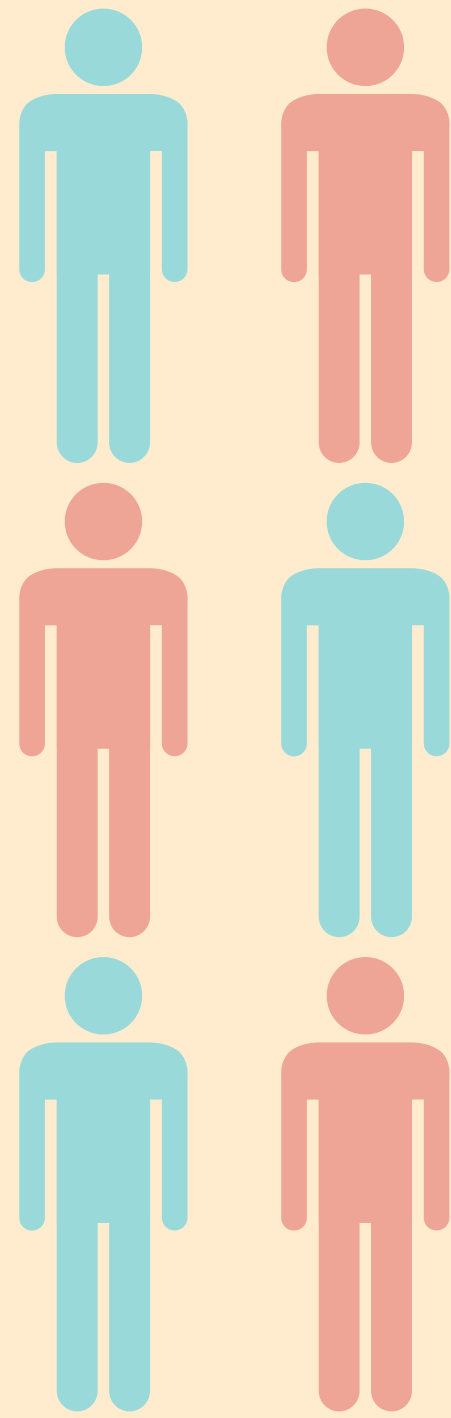
## CONTENT EXPERT

Having consumed countless anime & video game voice actor panels, Lexi will not only be able to choose questions that are unique, but also come up with plenty of her own in the case that audience questions are somehow not an option.

## MULTIPLE METHODS

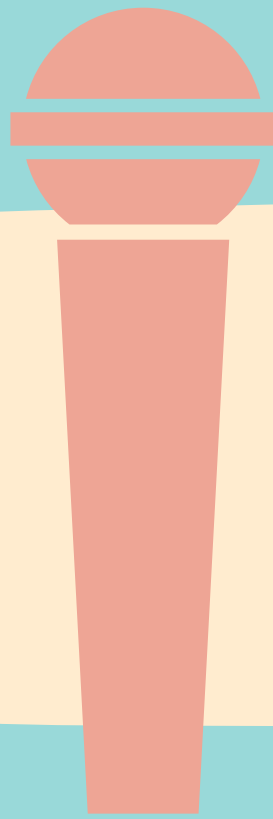
Depending on the available materials at your convention, Lexi is able to adapt the question-asking method accordingly.

No projectors?  
No internet?  
No microphones?  
No problem!



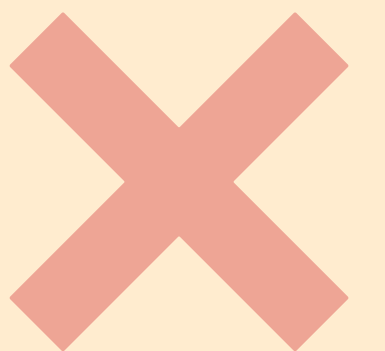
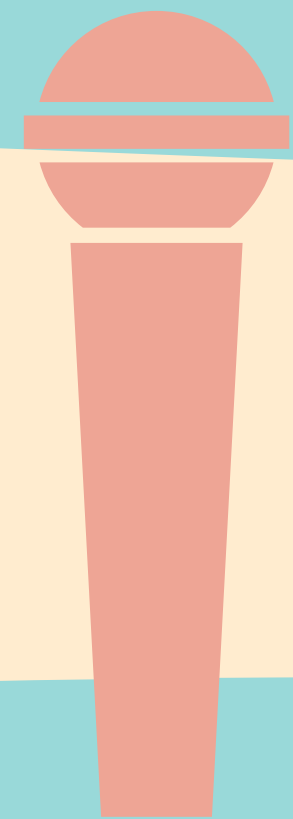
# THE CLASSIC AUDIENCE LINE-UP

# HOW IT WORKS



**WITH MICS:** Attendees who would like to ask a question line up behind an available microphone and ask their question during their turn.

**WITHOUT MICS:** Attendees line up towards the front of the room next to the moderator. Moderator can repeat the question louder or clearer if needed.



If several attendees are still in line during the final 10 minutes, we encourage the ever-popular “lightning round” to fit as many questions in as possible.

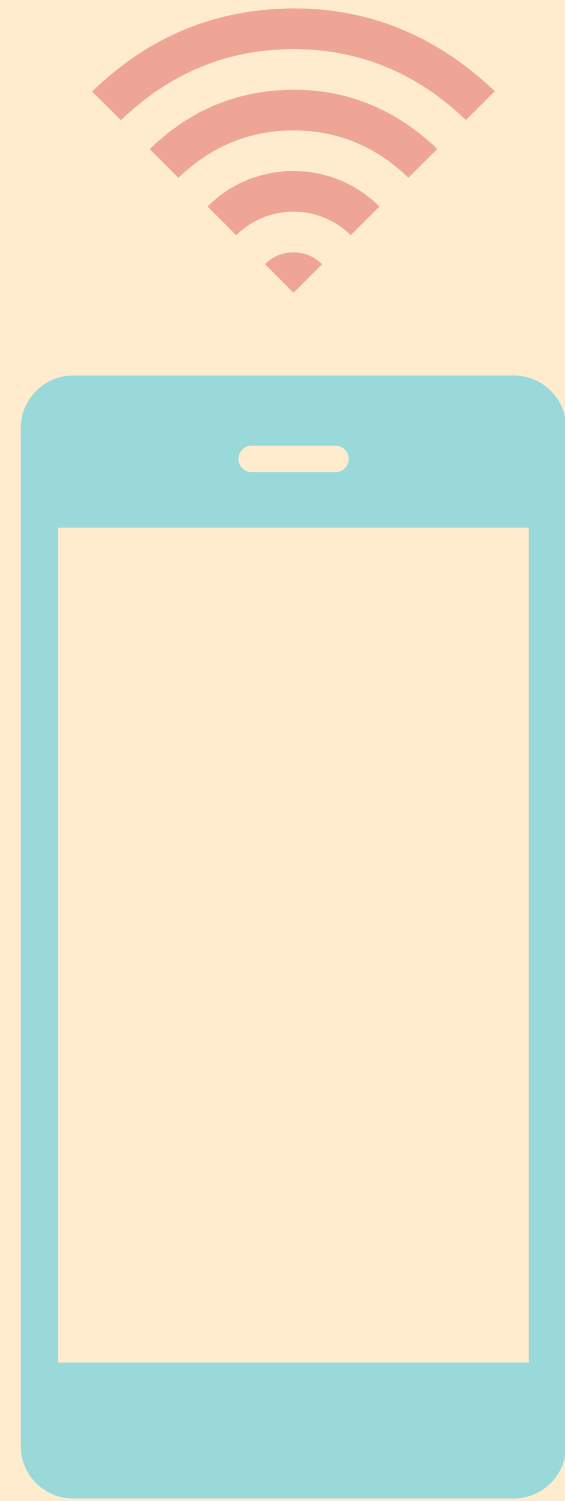
# SOME PROS & CONS OF THE AUDIENCE LINE-UP

## PROS

- Direct guest-to-attendee interaction during panel
- Faster than choosing raised hands/microphone running/etc.
- Can be efficiently executed without technology or external materials

## CONS

- No filtering or screening of questions unless extra staff is available
- Potential for over-asked or inappropriate questions
- Momentum flow slows if guest asks multiple questions or talks a bit too long



# MOBILE QUESTION SUBMISSIONS

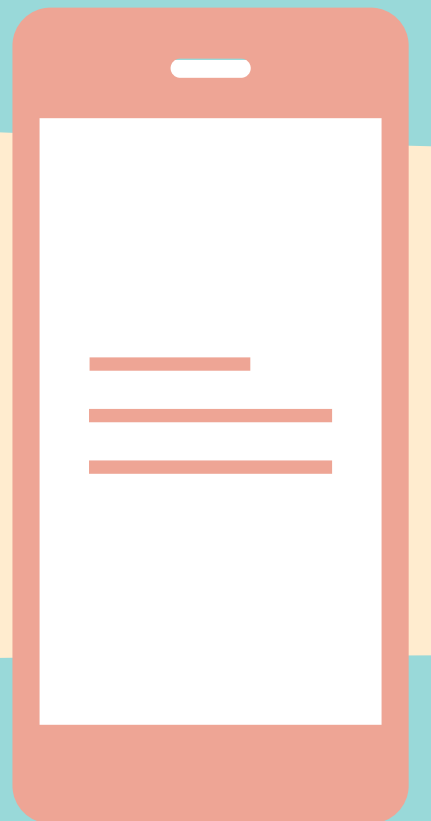
# HOW IT WORKS



A QR code of the link to the pre-made question submission form is projected onscreen in the designated panel room.

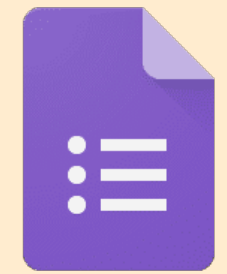


Attendees submit questions using their mobile device by scanning the QR code and filling out the submission form on their mobile browser.



Responses are received by the moderator to be filtered through and delivered to the guest panelist(s) efficiently.

# SUBMISSION FORM METHOD OPTIONS



## Google Forms

- Easy-to-use and access by anyone, Google Forms may be the most universally user-friendly method to receiving question submissions.
- View an example of what a Q&A Question Submission Form via Google Forms would look like **here**.

## CONVENTION WEBSITE

- Encourage attendees to visit your convention's website by programming your own submission form through your convention's official website!
- Attendees then potentially explore other parts of the website as well.



# SOME PROS & CONS OF MOBILE SUBMISSIONS

## PROS

- Active screening and filtering of all questions
- Clear and efficient delivery of questions, thus covering as many questions as possible
- Guaranteed avoidance of questions that may make guests uncomfortable

## CONS

- Very little direct guest-to-attendee interaction during panel
- Potential complaints attendees' questions were skipped or ignored
- Dependence upon internet/cell service inside convention venue



# TURNING SOME CONS INTO A PRO!

- Very little direct guest-to-attendee interaction during panel

- Potential complaints attendees' questions were skipped or ignored

At the beginning & end of each panel, we can encourage guests to visit the actors at their autograph tables for one-on-one interaction. This way, the interaction is much more personal and the actors may make more print, photo, & autograph sales!

# A LITTLE MORE ABOUT LEXI



**LEXI NIETO** is an actor, singer, & visual artist currently based in Dallas. Since she discovered them on YouTube at the age of 13, voice actor panels have been Lexi's favorite part of any convention. Now, after receiving training in theatre and live performance, Lexi has found that hosting voice actor panels is the perfect way to combine her knowledge, passions, and skills!

## RELEVANT LINKS

**Lexi's Website**

**Lexi's Hosting Resume**

**Shonen Showtunes Webpage**

**Shonen Showtunes: The Panel  
@ MetroCon 2021**